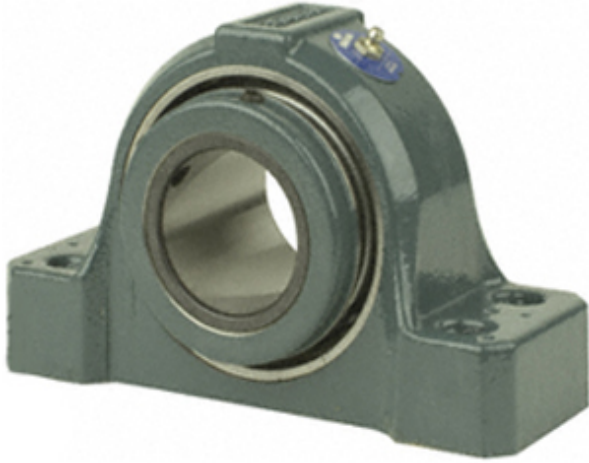




## BEARING CORP.



2.938 Inch | 74.625 Millimeter x 3.59 Inch |  
 91.186 Millimeter x 3.125 Inch | 79.38 Millimeter  
 DODGE SEP4B-S2-215R Pillow Block Bearings

Bearing No. SEP4B-S2-215R

SEP4B-S2-215R Bearing 2D drawings and 3D CAD models

Category	Pillow Block Bearings
Inventory	0.0
Manufacturer Name	ABB MOTORS AND MECHANICAL INC
Minimum Buy Quantity	N/A
Weight	13.562
EAN	0782476367473
Product Group	M06288
Number of Mounting Holes	4
Mounting Method	Concentric Collar
Housing Style	4 Bolt Pillow Block
Rolling Element	Spherical Roller Bearing
Housing Material	Cast Steel
Expansion / Non-expansion	Non-expansion
Mounting Bolts	5/8 Inch
Relubricatable	Yes
Insert Part Number	INS-S2-215R
Seals	Triple Lip Contact
Housing Configuration	1 Piece Solid
Inch - Metric	Inch
Other Features	Double Row   Has Flinger   With Set Screw
Long Description	4 Bolt Pillow Block; 2-15/16" Bore; 3-1/8" Base to Center Height; Concentric Collar Mount;



## BEARING CORP.

	Spherical Roller Bearing; 9.18" Minimum Bolt Spacing; 9.82" Bolt Spacing Maximum; Relubri
Category	Pillow Block
UNSPSC	31171511
Harmonized Tariff Code	8483.20.40.80
Noun	Bearing
Keyword String	Pillow Block
Manufacturer URL	<a href="http://www.dodge-pt.com">http://www.dodge-pt.com</a>
Manufacturer Item Number	SEP4B-S2-215R
Weight / LBS	22.79
Actual Bolt Center to Center	0 Inch   0Millimeter
Bolt Spacing Minimum	9.18 Inch   233.172Millimeter
D	3.59 Inch   91.186 Millimeter
Nominal Bolt Center to Center	9.5 Inch   241.3 Millimeter
d	2.938 Inch   74.625 Millimeter
Bolt Spacing Maximum	9.82 Inch   249.428Millimeter
B	3.125 Inch   79.38 Millimeter